



Powerdynamo brings new ignition & light  
to your vintage motorcycle

Company    Products    Technical Help    Search



Assembly instructions for **system 73 92 999 00**

Version **15.06.2011**

**If you can install and time a stock ignition and possess basic mechanical skills, you can install a Powerdynamo!**

**If you never have worked on your ignition, better have it done by someone who knows.**

Powerdynamo can not monitor the compliance to those instructions, nor the conditions and methods of installation, operation, usage and maintenance of the system. Improper installation may result in damage to property and possibly even bodily injury. Therefore we assume no responsibility for loss, damage or cost which result from, or are in any way related to, incorrect installation, improper operation, or incorrect use and maintenance. We reserve the right to make changes to the product, technical data or assembly and operating instructions without prior notice.



**IMPORTANT:**

**Please read these instructions fully and carefully before starting work on your motorcycle**

Please bear in mind that **any modification of the material as well as own repair attempts which have not been agreed with Powerdynamo may result in a loss of warranty. Do not cut off wires. This leads to a loss of reverse polarity protection and often results in damage to electronics.** Also, please take note of the information provided on the information page for this system. Check that what you have bought really corresponds to the motorcycle you have. Wrong ignition settings may damage your engine and even hurt you during kickstart (violent kickbacks). Be careful during the first test runs. If needed change settings to safer values (less advance). During assembly check carefully that the **rotor (flywheel) does not touch the stator coils or anything else**, which may happen due to various circumstances and lead to severe damage.

**Designated use**

This system is designated to replace stock dynamo/alternator & ignition systems in vintage and classic motorcycles **whose engine characteristics have not been modified aftermarket.** This system is not a tuning system and it will not bring significant increases in engine output. It does however significantly enhance roadworthiness and comfort by offering better lighting, better function of side indicators and horn and, compared with the aging stock systems, increased reliability. As our system does not tamper with engine characteristics it does not increase emission of gaseous pollutants and noise. In most cases emission of pollutants should even be reduced due to better combustion. If used as designated the system therefore will not normally infringe the existing legal status of the motorcycle (this statement is valid for Germany, for other countries, please check locally against your road licensing regulations). This system is not suitable for use in competition events. If used other than the designated way, warranty will be voided and it might well be that you do not obtain the desired results or, worst you loose legal roadworthiness.

**The charging system is only suitable for use with rechargeable 12V (6V systems 6V) lead-acid batteries** with liquide electrolyte or sealed lead-acid batteries, AGM, Gel. **It is not**

suitable for use with nickel-cadmium, nickel-metal-hydride, lithium-ion or any other types of rechargeable or non rechargeable batteries.

This is a **replacement system and not a copy of the stock material**. The parts in this system therefore look different and might fit differently (notably ignition coil and regulator) requiring some adaptation by you.

**During assembly imperatively start with assy of engine based parts** to see that those really fit before you start fitting the external parts. In many cases customers assemble those first and thereby often **modify them in breach of warranty** which renders them unfit for renewed sale. **Replacing old ignition systems is not a matter of taking something from a supermarket shelf as there have been very many types, versions and possibly unknown aftermarket modifications which harbour plenty of room for error.**

Our systems are **NOT tested for use with third party electronic devices (such as GPS, mobile phones, LED lighting etc) and may cause damage to such parts**. Possibly existing **electronic tachometers** will not work with the new system. Read our **information for suitable solutions**. Possibly existing safety switches and electronic valve controls are not supported. It might be that your motorcycle was originally equipped with an ignition that did limit top speed for legal reasons. The new system does not have such a facility, so check your legal situation beforehand.

If you have no expertise for the installation have it done by an expert or at a specialist's workshop. Improper installation may damage the new system and your motorcycle, possibly even lead to bodily harm.

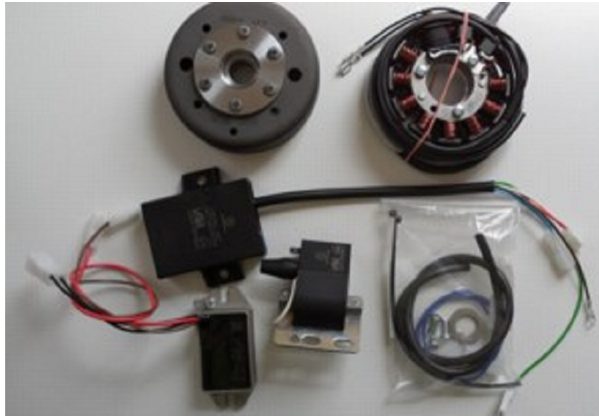
Before you order a system, please check whether a **puller tool** for the new rotor is included in the kit. If not, better order it at the same time. You might want to order light **bulbs, fuse, horn, flasher unit** etc.

Never use anything other than the recommended puller tool to pull the new rotor again. Damage to the rotor as a result of use of other tools or methods is not covered by warranty.

The rotor is sensible to blows (including during transport). Before assembly, please always check for damage (on rotor without magnet plastification try to push the magnets aside with your fingers). After impact the glued in magnets might have broken loose, sticking to the rotor solely by magnetic force, so that one does not notice right away. During engine run the damage would be considerable. Before placing the rotor onto the engine, please make sure that its magnets have not collected any metal objects such as small screws, nuts and washers. That equally would lead to severe damage.



**If you have access to the Internet, best view those instructions online.** You get larger and better pictures by clicking onto them and possibly updated information. System list at <http://www.powerdynamo.biz>



### You should have received those parts:

- rotor
- pre-assembled stator unit
- ignition coil / ht-cable
- regulator/rectifier
- advance unit (black box)
- incidentals



To pull the new rotor again, you need a puller M27x1,25 (part-no.: 99 99 799 00 **-Not provided!**-).

**Note:** Never use a claw puller, a hammer or any other device, that will shake the magnets off.

Make sure your MV rests securely on her centre stand, preferably on an elevated work bench and that you have good access to the generator side of the engine.

Disconnect your battery and take it out of the motorcycle. Note that you will install a 12 volts system, so you will either need a 12 volt battery or you use the option of driving without. You will still have to replace all lightbulbs to 12 volt ones. The horn may stay at 6 volts.

For [driving without battery](#), please observe our [information on driving without battery](#). If you have installed bullseye indicators, you have to replace the battery by an [electrolyt condenser](#) with min. 20.000mF/16V for smoothing the pulsing voltage.

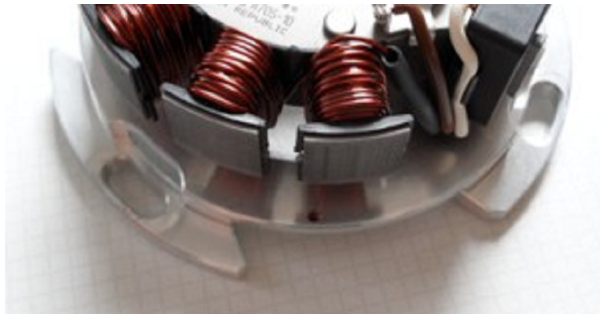
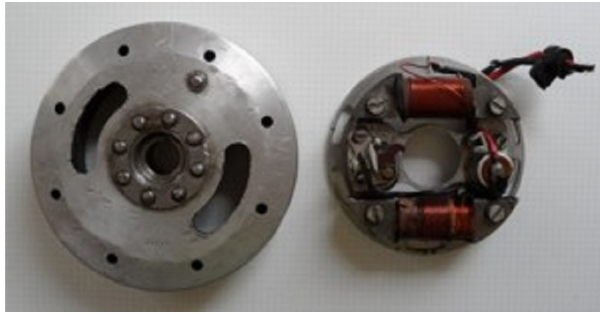
### In a first step, old parts will be taken off the bike!



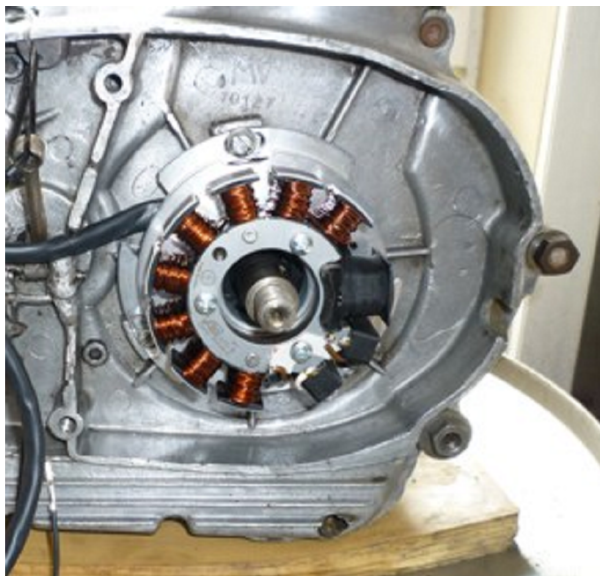
Unscrew the generator cover and take it off. Disconnect the wires from the old dynamo. Pull all wires out of the engine housing, but do not cut any wires yet.

Unscrew the old stator (3 screws) and take it off the engine. Pull the rotor off, you will need a puller screw for this. Take the woodruff key from the crank. You will not need it any more. Please do not forget to do so, otherwise you will have trouble later on in the assembly.

**(Remark:** This woodruff key does not actually hold your rotor on the shaft, this is done by the cone. It simply guides to the correct setting which will now be otherwise achieved.)



Have a look at the new stator unit. You will find a red marking at its base plate. This is a timing mark for ignition. This mark will be covered by the rotor, you should continue it on the engine housing.

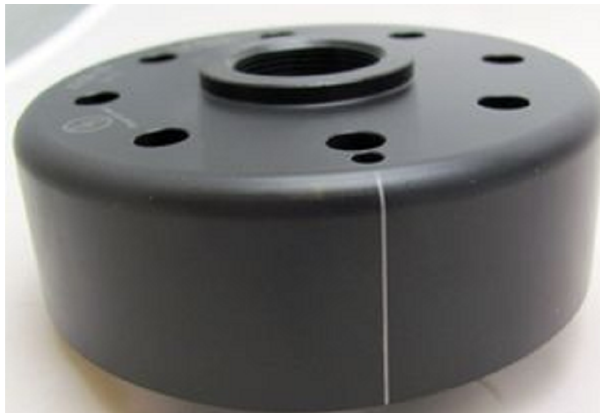


Place the pre-assembled stator assembly onto the engine, same place as your original stator had been sitting. The wire should exit like the stock system. Screw the plate down with the 3 screws M5 provided.

Lead the wiring harness from the stator through the wire opening at the front of the engine outside.



Should you take the stator coil completely off its base, make sure to reset it at the correct position. The wire has to lead through the correct opening (see picture). Otherwise you get a change in timing by  $120^\circ$  and the coloured markings are no longer correct.



Have a look at the new rotor. On its circumference you will find a small pressed in marking. The marking is durable, but not well visible, especially when the rotor is fixed. So it is a good idea to highlighten the marking with some colour (simplest with a marker-pen).

---

Take the spark plug out and bring the piston into top dead center position (TDC). As this is difficult to do with the kick lever, place the new rotor onto the crankshaft (do not screw it down) and use it as a handle to turn the crank.



Once TDC has been found, carefully disengage the rotor again without moving the crank shaft's position from TDC.

Then place it in such a way back, that the marking on the rotor aligns with the **red marking** on the base.

---

Fasten the new rotor by screwing it down with the origine screw and the 4 washers we delivered. Make sure not to change the crank position. Put the spark plug in again.

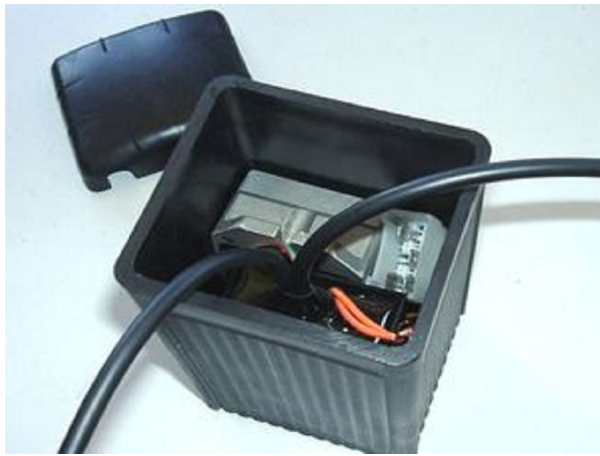
It might will be that after some test runs you may wish to modify timing a little. After all, there are more than one type of MV and out setting is a standard fail safe one.

You change timing by:

- screwing the puller into the rotor, popping it from the crank
- and (without changing the position of the crank) resetting the rotor at the wanted angle. Setting it more into a clockwise position will initiate earlier timing, shifting it anticlockwise will bring later - remember, you have a leftturning engine.

---

Now, the new ignition coil, the advance unit and the new regulator/rectifier have to find a place on the motorcycle. The regulator is well dimensioned and does not need to get airflow.



You may place the parts at any convenient spot, including an [empty battery casing](#).

As the system may [work without battery](#) that gives an easy place for hiding the parts.

Before installing the advance unit, have a look at the small switches at the advance unit. They activate different characteristics. There are 4 switches activating different advance curves.



The best curve for MV (in our opinion) is shown here. From 4° advance at idling revs, it goes up to a full advance of 40° at 3.500rpm.



Should want to experiment with a different setting, use this (full advance is at 3.000rpm, but 38° only).



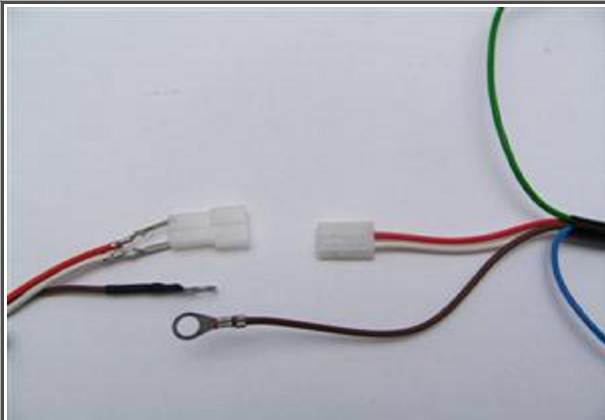
Or this one, where full advance of 38° is reached at 5.000rpm only (probably not the best option).



Should you want to throttle the engine back at revs higher than 8.500rpm with a start up at 4° at idling and max. advance of 40° at 3.000rpm, use this setting.

Connect the parts as shown in the [wiring diagram 91ik\\_102!](#)

\* To facilitate wire exit through the often small openings in the engine casing, the plastic plug of the generator's wiring that leads to the advance unit has not been put onto the wire terminal. You should place the plug there only once all has been properly installed on the engine side.

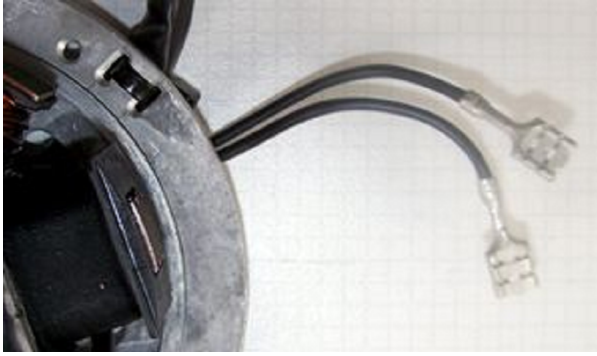



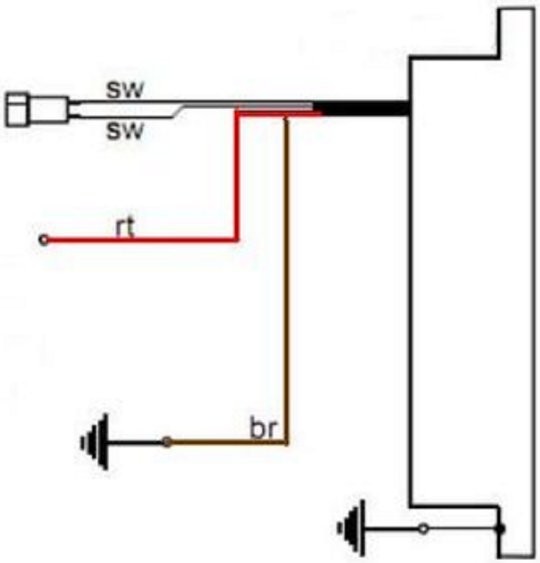
Look for the advance unit with its female plug and the two wires (red and white).

Put the provided 2-position plug housing onto this plug and insert the two wires (red and white) from the generator. Make sure that the terminals engage securely in the housing and that you connect:

- white to white
- red to red

Should you need (or want) to get the terminals out of the plug housing again, enter a paper clip from front next to the terminals and push the little barb aside. Then pull the

	wire out.
* The brown wires <b>from the new generator and the advance unit</b> with the round eye terminals ...	... have to be screwed to the holder frame of the ignition coil (ground). This connection is very important. Please do not rely on the frame as <i>the</i> earth-connection. Paint, oil and dirt prevent often a good contact!
* The green (older systems grey) cable of the advance unit ...	... is the output of the to the ignition coil and gets connected to the single male terminal there.
* <b>Important!</b> Avoid prolongation of the green wire between advance unit and ignition coil. <a href="#">This may lead to ignition trouble.</a> Never run the high tension cable and the cables from the generator to the advance and/or the grey wire from the advance to the ignition coil closely in parallel (say in one shielding). This will trigger back coupling that disturbs ignition and might even damage the advance unit.	
* The blue/white wire at the advance unit. This is the kill (cut-off) wire.  <b>Note:</b> Should you experience ignition failures, disconnect as a first measure this blue wire. In many cases that will permit you to get mobile again (particulars see: <a href="#">technical help</a> )!	<b>Connected to ground - it will stop ignition!</b>  This type of wiring is used in motorcycles which originally already had magneto ignition and therefore switch off by shortcircuiting against ground.  Those vehicles have by design a main lock (or some kill switch) that connects a pin to ground when in OFF position (German bikes: pin 2). The blue/white wire of the ignition coil will be connected here. In that way the cut-off works as before.
* <b>Connecting Powerdynamo alternator to lighting circuit (via regulator):</b>	
	The 2 black wires running from the stator coil carry the voltage for lights, horn, flashers etc. They have nothing to do with ignition.  This voltage (something between 10 and 50 volts AC depending on engine speed) has however to be stabilized (regulated) and rectified into direct current (DC).
 <b>Attention:</b> Any <b>confusion between plus and minus</b> leads to <b>immediate destruction of the regulator</b> . This will not constitute a warranty case as it is negligence! One can recognize a burnt regulator in most cases by its sharp burnt smell.	
* <b>The regulator of this system:</b> has a inbuilt smooting condenser which enables full function of flashers and horn with or without a battery present:	

	<ul style="list-style-type: none"> <li>■ the 2 black (sw) wires are the AC input from the alternator (as it is AC it does not matter which black to which black)</li> <li>■ the red (rt) wire is the positive (plus) 12V DC output</li> <li>■ the brown (br) wire is the negative (minus) ground, internally connected to the regulator housing</li> </ul>
<p>* Screw the high tension (ignition) cable ...</p> <p>Please <b>do not use</b> any spark amplifying cables, such as "Nology supercables" or "hot wire". This will disturb the system and possibly damage it.</p>	<p>... into the ignition coil and pull over the rubber seal before mounting the coil (it will be easier).</p> <p>Please do use the cable arriving with the pack and not any old cable.</p>
<p>You will do yourself a favour to treat your bike to a new spark plug and spark plug socket (preferably some between 0-2kOhm). Plenty of problems are to be traced back to "apparently good" (even completely "brand-new") sparks plugs, terminals and cables. <b>Do not use</b> resistor containing caps AND spark plugs with an internal suppression resistor. NGK (e.g.) offered such spark plugs coded with an "R" (for resistor).</p>	
<p>* Finally - <b>and before installing the battery and before the first kickstart</b> - please re-check carefully all connections and fitments against the wiring diagram. Do check battery and light bulbs for correct voltage (12V).</p> <p>Should something not work, please consult our <a href="#">trouble-shooting guide</a> on our homepage. As a first step disconnect the blue wire from the coil and re-test.</p>	
<p>* <b>IMPORTANT:</b> During <b>crank shaft repair</b> the dynamo shaft is often machined and gets shorter. The result is a rotor sitting lower, possibly touching now the stator coil. The result is a destroyed stator and ignition failure. For <a href="#">more detail and how to check see (online) here</a>.</p>	
<p><b>Important safety and operating information</b></p>	
<p># Safety first! Please observe the <a href="#">general health and safety regulations motor vehicle repair (MVR)</a> as well as the safety information and obligations indicated by the manufacturer of your motorcycle.</p> <p>The timing marks on the material are for general guidance only during first installation. Please check after assembly by suitable means (stroboscope) that settings are correct to prevent damage to the engine or possibly even your health. You alone are responsible for the installation and the correctness of settings.</p>	
<p># <b>Ignition systems generate high tension!</b> With our material right up to 40,000 Volts! This may, if handled carelessly, not only be painful, but outrightly <u>dangerous</u>. Please do keep a safe distance to the electrode of your spark plug and open high tension cables. Should you need to test spark firing, hold the spark plug socket securely with some well insulating material and push it firmly to solid ground of the engine block.</p> <p>Never pull sparkplug caps when engine is running. Wash your vehicle only with engine at standstill and ignition off.</p>	

#	Should you have received in the kit HT cables with a fixed rubber boot(which does not contain a resistor) you might have to use spark plugs with an inbuilt resistor (or replace the cap with one containing a resistor) to comply with your local laws.
#	After installation, please <u>check tightness of all screws, even those preinstalled</u> . If parts get loose during run, there will be inevitably damage to the material. We pre-assemble screws only loosely.
#	Give the newly installed system a chance to work, <u>before you start to check and test values</u> , or what is worse apply changes to it. Our parts have been checked before delivery to you. You will not be able to check much anyway. <b>At any rate do refrain from measuring the electronic components (such as ignition coil, regulator and advance unit). You risk severe damage to the inner electronics there. You will not get any tangible results from the operation anyway.</b> Bear in mind that also your carburetor, your spark plugs and spark plug sockets (even if completely new) might be the reason for malfunction. The general experience with our systems is that the carburetor will have to be re-adjusted to lower settings. Should the system not start after assembly, first disconnect the blue (or blue/white) cut-off wire directly at the ignition coil (or in some cases advance unit) to eliminate any malfunction in the cut-off circuitry. Check ground connections carefully, make sure there is a good electrical connection between frame and engine block. In case of troubles, please consult our <a href="#">Knowledge Base</a> first before you send off the material to us for checking
#	The spark of classic, points based ignition systems has with about 10,000 Volts comparatively little energy and looks therefore yellow and fat (which however makes it highly visible). The spark from our system is a high energy spark with up to 40,000 Volts and therefore is needle thin focused in form, and blue in colour, which makes it not so visible. Furthermore you get spark only at kick-start operated speeds and not by pushing the kick-lever down slowly with your hand (as you might get with battery based ignitions).
#	Systems using a <a href="#">twin outlet ignition coils</a> have a few peculiarities. Please observe that during tests on one side, the other has either to be connected to an fitted spark plug or securely earthed/grounded. Otherwise there will be no spark on either side. Also with such open exits long and dangerous sparks may fly all over the coil.
#	Never do electric arc welding on the bike without completely disconnecting all parts containing semiconductors (ignition coil, regulator, advance) stator and rotor need not be taken off. The same is true for soldering. Before touching electronics disconnect the soldering iron from mains! <b>Never use copper putty on spark plugs.</b>
#	Electronics are very sensitive to wrong polarity. After work on the system, do check correct polarity of the battery and the regulator. Wrong polarity creates short circuits and will destroy the regulator, the ignition coil and the advance unit. As a rule, wiring will always be colour to colour. Instances, where colour jumps between wires are expressly mentioned in our instructions.
#	When you handle the new rotor, take care not to damage its magnets. Refrain from direct blows to the circumference of the rotor. <b>When transporting never put the rotor over the stator.</b> <a href="#">Observe our information relative to transport of the material.</a>
#	Do not use spark plug sockets with a resistance of more than 5kOhm. Better use 1 or 2kOhm ones. Bear in mind that spark plug sockets do age and thereby increase their internal resistance. Should an engine start up only when cold, a defective spark plug socket and/or spark plug is very probably the cause. In case of problems check high tension cables too. Never use carbon fibre HT-cables, never use so called "hot wires" which promise to increase spark.
#	It is a good idea to cover the rotor in a thin layer of oil to reduce the risk of corrosion.
#	Never use a claw puller or a hammer to disengage the rotor. Its magnets might become loose in the event. We offer a special puller for disengaging the new rotor again (see assembly instruction)!

#	Should the motorcycle not be in use for some longer period, please disconnect the battery (so existing) to prevent current bleeding through the diodes of the regulator. Though, even a disconnected battery will empty itself after a while.
#	Please do observe these remarks, but at the same time, don't be afraid of the installation process. Remember, that before you, thousands of other customers have successfully installed the system. <b><i>Enjoy driving your bike with its new electric heart!</i></b>



[Imprint](#)   [Datenschutz](#)   [Sitemap](#)